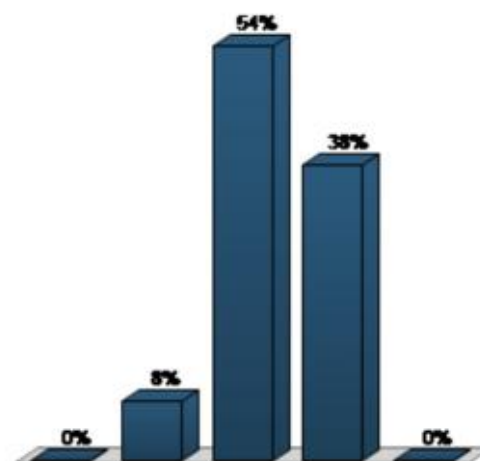


**Session Name:** 2015jUL17\_EvaluationResults**Date Created:** 17/07/2015 5:05:05 PM**Active Participants:** 17 of 17**Average Score:** 0.00%**Questions:** 24

## Results by Question

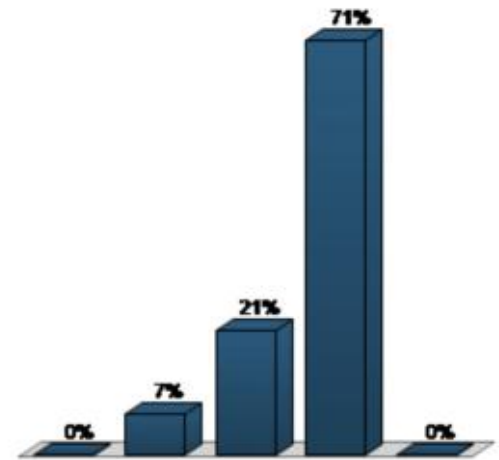
### 1. How did the overall course content compare with your expectations? (Multiple Choice)

	Responses	
	Percent	Count
Strongly disappointed	0%	0
Somehow below my expectations	7.69%	1
Met my expectations	53.85%	7
Slightly surpassed	38.46%	5
Highly surpassed my expectations	0%	0
<b>Totals</b>	<b>100%</b>	<b>13</b>



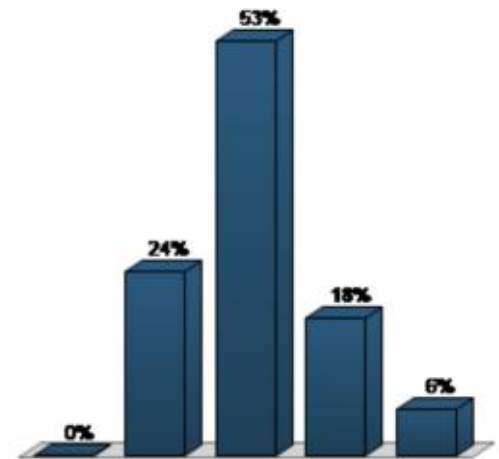
## 2. Do you think that the City Prosperity Initiative (CPI) would be useful for your city? (Multiple Choice)

	Responses	
	Percent	Count
I did not understand what the CPI is	0%	0
No, there are other priorities in my city	7.14%	1
Maybe	21.43%	3
Yes, it would be useful	71.43%	10
My city is already implementing the CPI	0%	0
<b>Totals</b>	<b>100%</b>	<b>14</b>



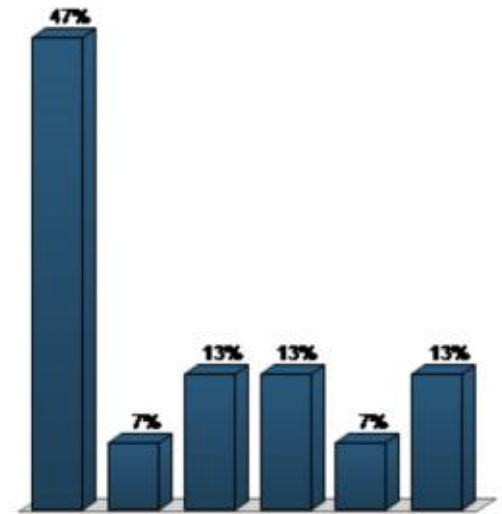
## 3. How do you rate the balance between theory and practice in the course? (Multiple Choice)

	Responses	
	Percent	Count
Extremely theoretical	0%	0
Slightly theoretical;	23.53%	4
Right balance of theory and practice	52.94%	9
Slightly too practical; principles and methodology were not clear enough;	17.65%	3
Extremely practical.	5.88%	1
<b>Totals</b>	<b>100%</b>	<b>17</b>



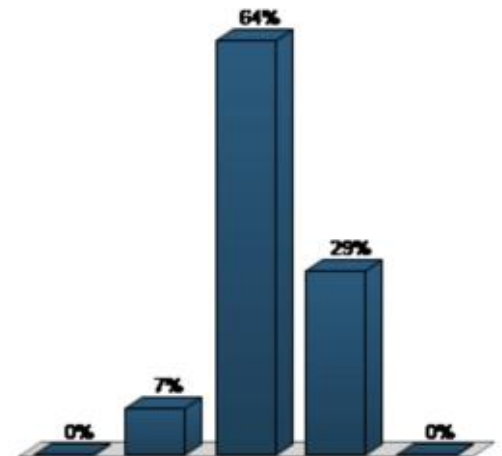
**4. Which option would you choose as the FIRST action to implement CPI in your city? (Multiple Choice)**

	Responses	
	Percent	Count
Organize data collection	46.67%	7
Develop the CPI indicators	6.67%	1
Organize and involve stakeholders	13.33%	2
Review master plans	13.33%	2
Review legislation	6.67%	1
Train municipal staff	13.33%	2
<b>Totals</b>	<b>100%</b>	<b>15</b>



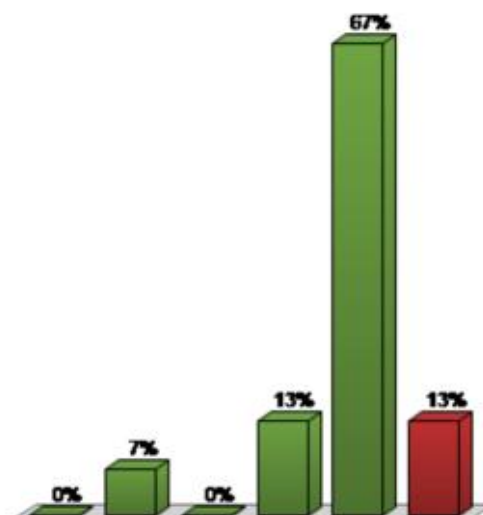
**5. How satisfied are you with the overall training methodology? (class sessions, simulation exercise, participants' presentations) (Multiple Choice)**

	Responses	
	Percent	Count
Very dissatisfied	0%	0
Somehow dissatisfied	7.14%	1
Overall satisfied	64.29%	9
Very satisfied	28.57%	4
I don't know	0%	0
<b>Totals</b>	<b>100%</b>	<b>14</b>



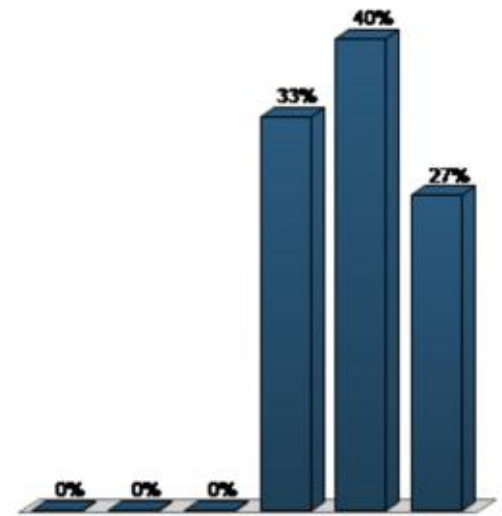
**6. Session 2 Introduction: The Global Challenge of Urbanization, Trends, Analysis and the CPI (Multiple Choice)**

	Responses	
	Percent	Count
Not a useful session ( c )	0%	0
Interesting, but not useful ( c )	6.67%	1
No new knowledge provided ( c )	0%	0
Useful, but lacks depth ( c )	13.33%	2
Useful, adequate knowledge and depth ( c )	66.67%	10
Very useful, very interesting	13.33%	2
<b>Totals</b>	<b>100%</b>	<b>15</b>

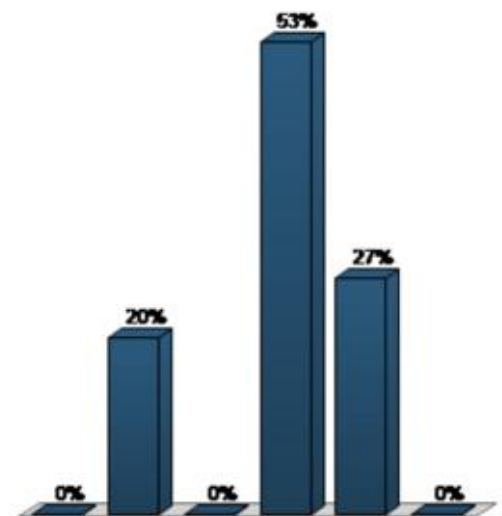


**7. Session 3The rationale of urban indicators (Multiple Choice)**

	Responses	
	Percent	Count
Not a useful session	0%	0
Interesting, but not useful	0%	0
No new knowledge provided	0%	0
Useful, but lacks depth	33.33%	5
Useful, adequate knowledge and depth	40%	6
Very useful, very interesting	26.67%	4
<b>Totals</b>	<b>100%</b>	<b>15</b>

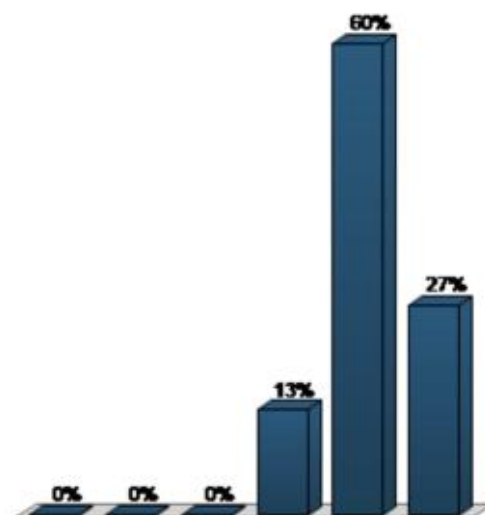
**8. Session 3bPresentation of Korean indicators (Multiple Choice)**

	Responses	
	Percent	Count
Not a useful session	0%	0
Interesting, but not useful	20%	3
No new knowledge provided	0%	0
Useful, but lacks depth	53.33%	8
Useful, adequate knowledge and depth	26.67%	4
Very useful, very interesting	0%	0
<b>Totals</b>	<b>100%</b>	<b>15</b>



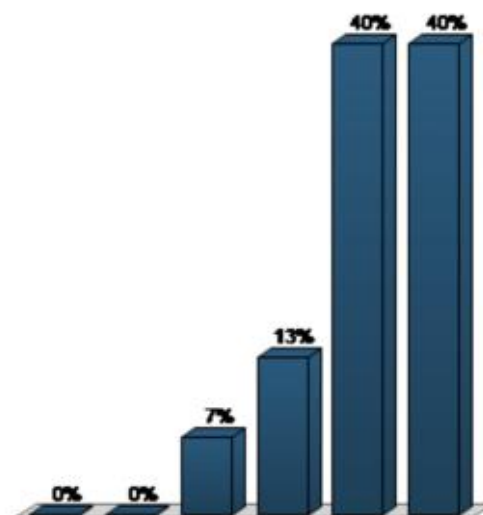
**9. Sessions 4 & 5 Global Case Studies: The DNA of indicators and international experiences (Multiple Choice)**

	Responses	
	Percent	Count
Not useful sessions	0%	0
Interesting, but not useful	0%	0
No new knowledge provided	0%	0
Useful, but lacks depth	13.33%	2
Useful, adequate knowledge and depth	60%	9
Very useful, very interesting	26.67%	4
<b>Totals</b>	<b>100%</b>	<b>15</b>



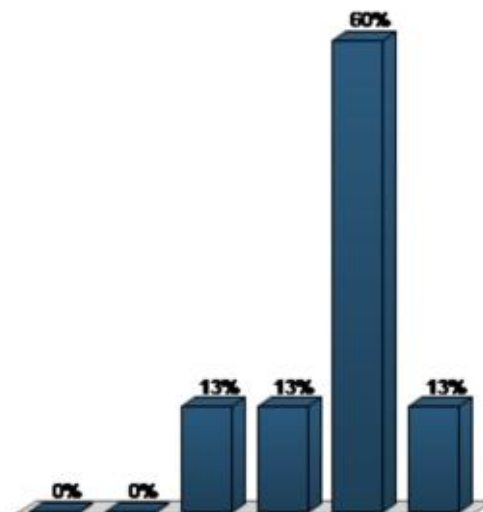
**10. Sessions 6 & 7Urban prosperity: Concept and policy implications; the CPI (Multiple Choice - Multiple Response)**

	Responses	
	Percent	Count
Not useful sessions	0%	0
Interesting, but not useful	0%	0
No new knowledge provided	6.67%	1
Useful, but lacks depth	13.33%	2
Useful, adequate knowledge and depth	40%	6
Very useful, very interesting	40%	6
<b>Totals</b>	<b>100%</b>	<b>15</b>



**11. Sessions 8 & 9 Applying the CPI in Guadalajara, Mexico. Outcomes and policy implementation (Multiple Choice)**

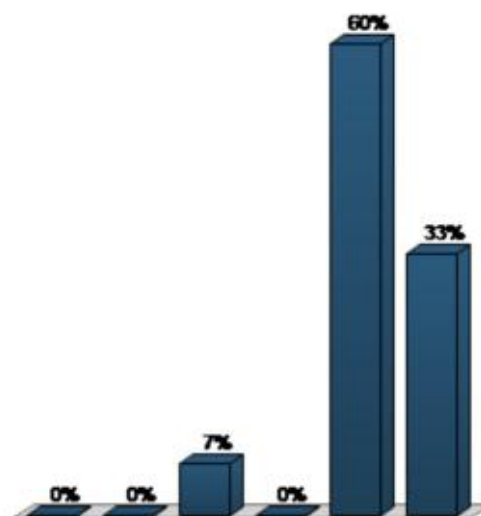
	Responses	
	Percent	Count
Not useful sessions	0%	0
Interesting, but not useful	0%	0
No new knowledge provided	13.33%	2
Useful, but lacks depth	13.33%	2
Useful, adequate knowledge and depth	60%	9
Very useful, very interesting	13.33%	2
<b>Totals</b>	<b>100%</b>	<b>15</b>



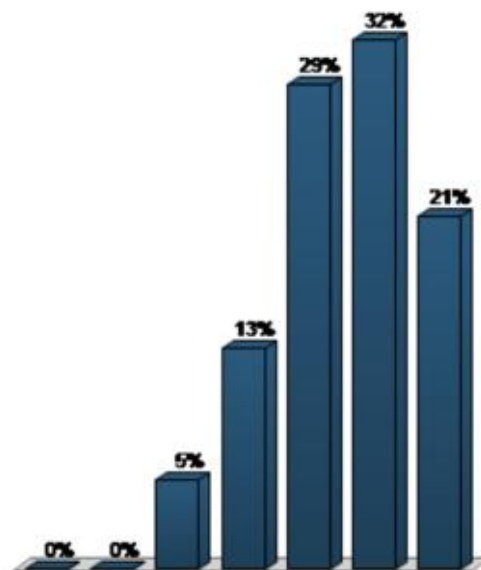


**12. Session 10 Global Comparison: The CPI in different cities (Multiple Choice)**

	Responses	
	Percent	Count
Not a useful session	0%	0
Interesting, but not useful	0%	0
No new knowledge provided	6.67%	1
Useful, but lacks depth	0%	0
Useful, adequate knowledge and depth	60%	9
Very useful, very interesting	33.33%	5
<b>Totals</b>	<b>100%</b>	<b>15</b>

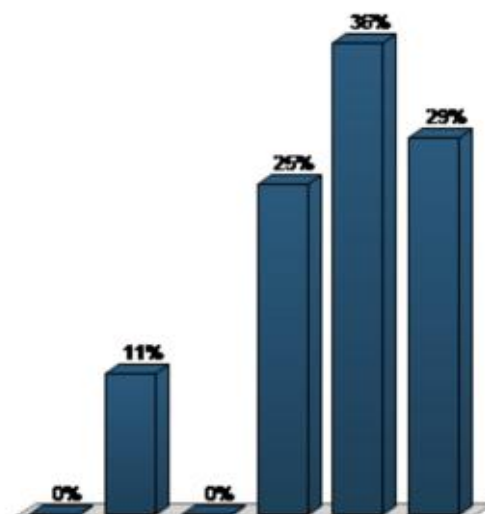
**13. Simulation exercises (Multiple Choice - Multiple Response)**

	Responses	
	Percent	Count
Not useful exercise	0%	0
Instructions not clear	0%	0
Material provided was not good	5.26%	2
Material and instructions were not good	13.16%	5
Clear instructions	28.95%	11
Good material	31.58%	12
Useful and instructive exercise	21.05%	8
<b>Totals</b>	<b>100%</b>	<b>38</b>

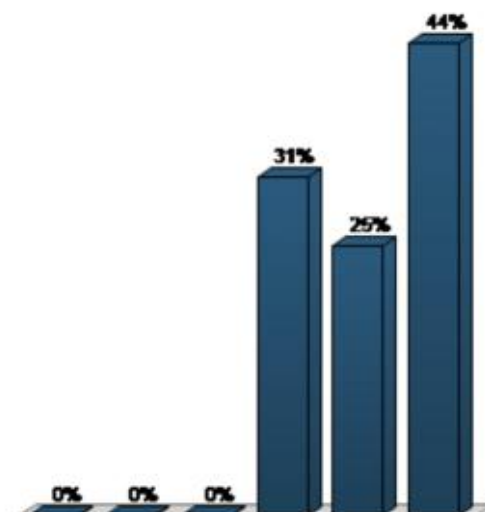


**14. Participants' presentations (Multiple Choice - Multiple Response)**

	Responses	
	Percent	Count
Not useful	0%	0
Instructions not clear	10.71%	3
Insufficient time for discussion	0%	0
Good interaction	25%	7
Useful peer-to-peer learning	35.71%	10
Useful and excellent opportunity for exchange!	28.57%	8
<b>Totals</b>	<b>100%</b>	<b>28</b>

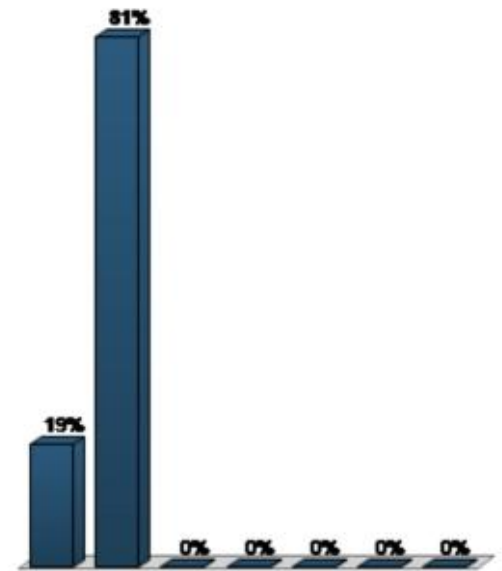
**15. CPI: Methodological and conceptual aspects; Spatial and Urban Dimensions (Multiple Choice)**

	Responses	
	Percent	Count
Not useful sessions	0%	0
Interesting, but not useful	0%	0
No new knowledge provided	0%	0
Useful, but lacks depth	31.25%	5
Useful, adequate knowledge and depth	25%	4
Very useful, very interesting	43.75%	7
<b>Totals</b>	<b>100%</b>	<b>16</b>

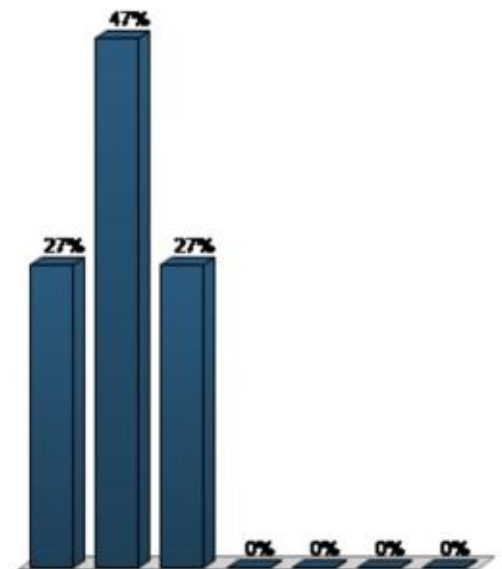


**16. The sessions were interactive and well facilitated (Multiple Choice)**

	Responses	
	Percent	Count
Strongly Agree	18.75%	3
Agree	81.25%	13
Somewhat Agree	0%	0
Neutral	0%	0
Somewhat Disagree	0%	0
Disagree	0%	0
Strongly Disagree	0%	0
<b>Totals</b>	<b>100%</b>	<b>16</b>

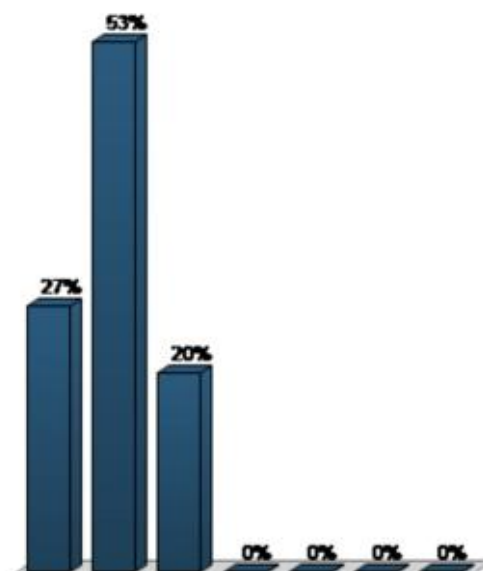
**17. The lecturers know their subjects well (Multiple Choice)**

	Responses	
	Percent	Count
Strongly Agree	26.67%	4
Agree	46.67%	7
Somewhat Agree	26.67%	4
Neutral	0%	0
Somewhat Disagree	0%	0
Disagree	0%	0
Strongly Disagree	0%	0
<b>Totals</b>	<b>100%</b>	<b>15</b>

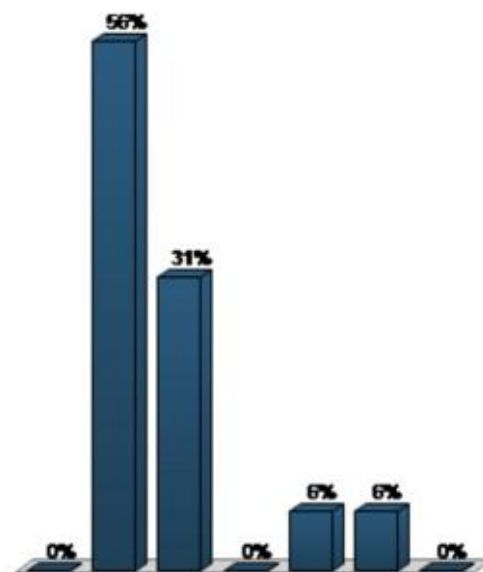


**18. The lecturers allowed sufficient time for questions and answers (Multiple Choice)**

	Responses	
	Percent	Count
Strongly Agree	26.67%	4
Agree	53.33%	8
Somewhat Agree	20%	3
Neutral	0%	0
Somewhat Disagree	0%	0
Disagree	0%	0
Strongly Disagree	0%	0
<b>Totals</b>	<b>100%</b>	<b>15</b>

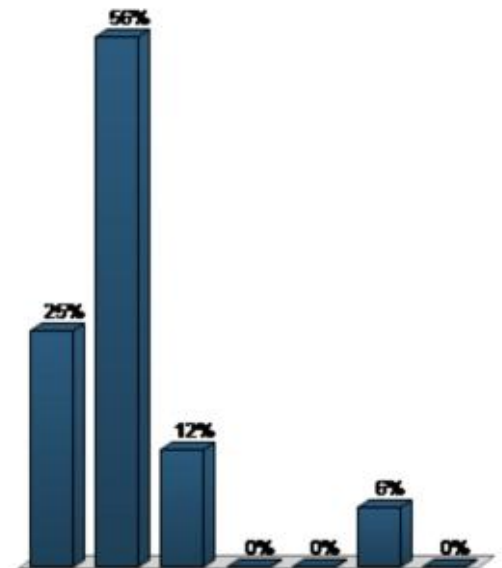
**19. Sessions' time and duration were well managed (Multiple Choice)**

	Responses	
	Percent	Count
Strongly Agree	0%	0
Agree	56.25%	9
Somewhat Agree	31.25%	5
Neutral	0%	0
Somewhat Disagree	6.25%	1
Disagree	6.25%	1
Strongly Disagree	0%	0
<b>Totals</b>	<b>100%</b>	<b>16</b>

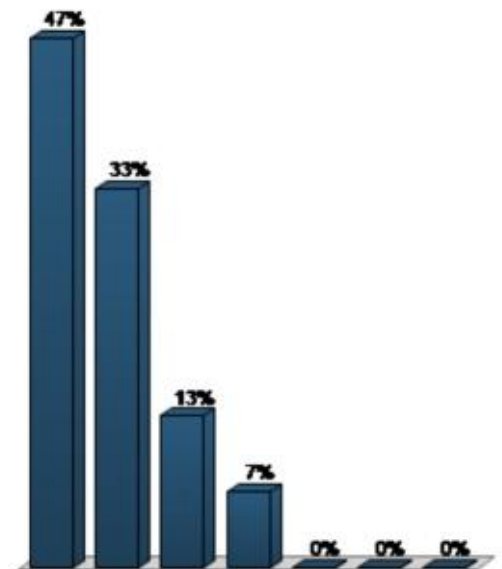


**20. IUTC training facilities are great (Multiple Choice)**

	Responses	
	Percent	Count
Strongly Agree	25%	4
Agree	56.25%	9
Somewhat Agree	12.5%	2
Neutral	0%	0
Somewhat Disagree	0%	0
Disagree	6.25%	1
Strongly Disagree	0%	0
<b>Totals</b>	<b>100%</b>	<b>16</b>

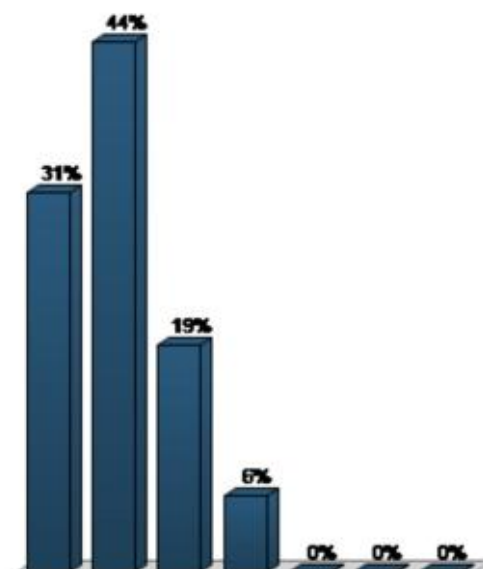
**21. The accommodation at IUTC is great (Multiple Choice)**

	Responses	
	Percent	Count
Strongly Agree	46.67%	7
Agree	33.33%	5
Somewhat Agree	13.33%	2
Neutral	6.67%	1
Somewhat Disagree	0%	0
Disagree	0%	0
Strongly Disagree	0%	0
<b>Totals</b>	<b>100%</b>	<b>15</b>

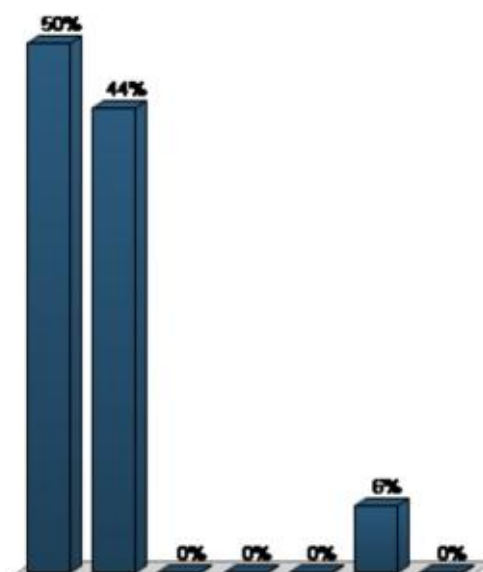


**22. The application procedure was easy and clear (Multiple Choice)**

	Responses	
	Percent	Count
Strongly Agree	31.25%	5
Agree	43.75%	7
Somewhat Agree	18.75%	3
Neutral	6.25%	1
Somewhat Disagree	0%	0
Disagree	0%	0
Strongly Disagree	0%	0
<b>Totals</b>	<b>100%</b>	<b>16</b>

**23. The staff at IUTC were friendly and helpful (Multiple Choice)**

	Responses	
	Percent	Count
Strongly Agree	50%	8
Agree	43.75%	7
Somewhat Agree	0%	0
Neutral	0%	0
Somewhat Disagree	0%	0
Disagree	6.25%	1
Strongly Disagree	0%	0
<b>Totals</b>	<b>100%</b>	<b>16</b>



**24. Training suggestions (Multiple Choice - Multiple Response)**

	Responses	
	Percent	Count
Urban Planning	25%	9
Urban management & governance	25%	9
Indicators for urban decision-making	11.11%	4
Urban legislation	5.56%	2
Municipal finance	5.56%	2
Housing	0%	0
Land policies	11.11%	4
Slum upgrading	5.56%	2
Cities and climate change	8.33%	3
Urban risk reduction	2.78%	1
<b>Totals</b>	<b>100%</b>	<b>36</b>

